

Help us shine a light on exploitation

The Bedfordshire Violence and Exploitation Reduction Unit (VERU) works with the police, councils, doctors, charities, schools, communities and young people to tackle things like gangs, knife crime and county lines.

We think violence is preventable. By tackling the root causes of these issues, we can offer our young people a brighter future free from violence and exploitation.

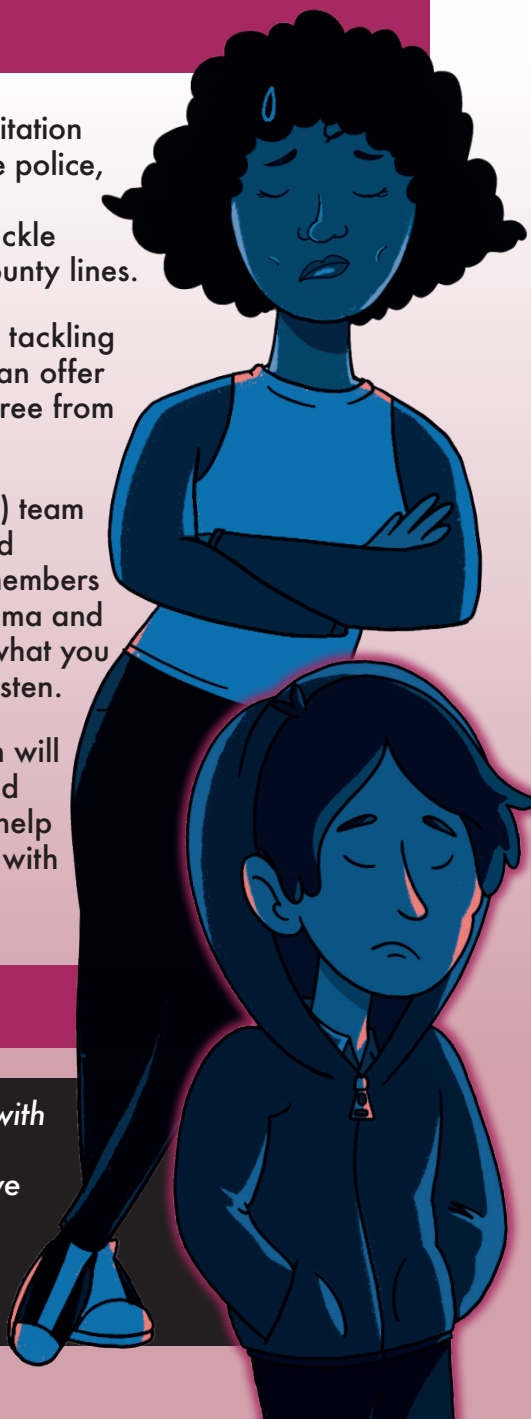
Our Youth Intervention Specialist (YIS) team comes with a wealth of both lived and professional experience. Our team members have experienced life in a gang, trauma and the impact of knife crime. We know what you are going through and are here to listen.

We are not the police. Our YIS team will work with young people, families and other professionals to offer you the help and support you need. Get in touch with us today.

Visit bedsveru.org

"As a community, we can't solve this with just the police, we can't solve it with individuals. It can only be solved if we work as a team together."

**Roseann Taylor,
VERU Youth Intervention Specialist**



Help us shine a light on exploitation

The Bedfordshire Violence and Exploitation Reduction Unit (VERU) works with the police, councils, doctors, charities, schools, communities and young people to tackle things like gangs, knife crime and county lines.

We think violence is preventable. By tackling the root causes of these issues, we can offer our young people a brighter future free from violence and exploitation.

Our Youth Intervention Specialist (YIS) team comes with a wealth of both lived and professional experience. Our team members have experienced life in a gang, trauma and the impact of knife crime. We know what you are going through and are here to listen.

We are not the police. Our YIS team will work with young people, families and other professionals to offer you the help and support you need. Get in touch with us today.

Visit bedsveru.org

"As a community, we can't solve this with just the police, we can't solve it with individuals. It can only be solved if we work as a team together." **Roseann Taylor, VERU Youth Intervention Specialist**





Help us shine a light on exploitation

The Bedfordshire Violence and Exploitation Reduction Unit (VERU) has a Youth Intervention Specialist (YIS) team which comes with a wealth of both lived and professional experience. They work with and support victims, witnesses and those involved in criminal activities – especially around things like gangs, knife crime and county lines.

Our aim is to encourage the reduction of violence and child criminal exploitation in communities across Bedfordshire. We provide a supportive service to educators, children, young people and their families – even if they are not engaging with other services.

Support Available:

- One-to-one support
- Specialist counsellor to the VERU and therapeutic service
- Group advisory sessions
- Education, awareness and careers support
- Support for school inclusion units and alternative provisions
- County lines awareness
- Gang interventions
- Personal safety planning
- Family support
- Multi-agency support and signposting
- Mediation and community resolution
- Multimedia resources and tutorials
- Community talks
- Workshops and school assemblies

For more information about our **FREE** service or to speak to someone about a concern please visit **bedsveru.org**

MASJID AL-GHURABAA

WWW.MOSLIMCOUNCILSUK.COM

MASJID AL-GHURABAA

ILLU

V VIOLENCE AND
XPLOITATION
REDUCTION UNIT
BEDFORDSHIRE



The VERU Village is a community led list of support services which can help people at risk of violence and exploitation.

Visit bedsveru.org/veru-village



BAVEX is the partnership campaign against all forms of exploitation linked to organised crime. Find out more about the signs to spot and how to report concerns.

Visit bavex.co.uk

Drug and alcohol support services

There are specialist drug and alcohol support services available for young people in Bedfordshire.

Bedford / Central Bedfordshire

Aquarius

Email YPBedfordshire@aquarius.org.uk

Call 0300 008 3925

Call/Text/Whatsapp 07467 336203

Luton

ResoLUTiONs

Call 0800 054 6603

Email resolutions.info@cgl.org.uk

Visit resolutions4luton.org