



BELIEVE



SAMUEL WHITBREAD ACADEMY
SIXTH FORM
Believe - Achieve - Succeed - Exceed

WHY CHOOSE US?

- 🏆 Strong Ethos of Achievement
- 📖 Extensive Level 3 Courses
- 🎯 Outstanding Results & Destinations
- ★ Comprehensive Enrichment
- 👤 Personalised Support
- ❤️ Inclusive Learning Environment
- 📁 Focus on Employability & Skills
- 🔄 Flexible Progression Pathways
- 📅 English & Maths Resits
- 🏢 Modern Facilities
- 🤝 Vibrant Student Community

JOIN SAMUEL WHITBREAD ACADEMY SIXTH FORM - WHERE AMBITION MEETS OPPORTUNITY



ACHIEVE



SUCCEED



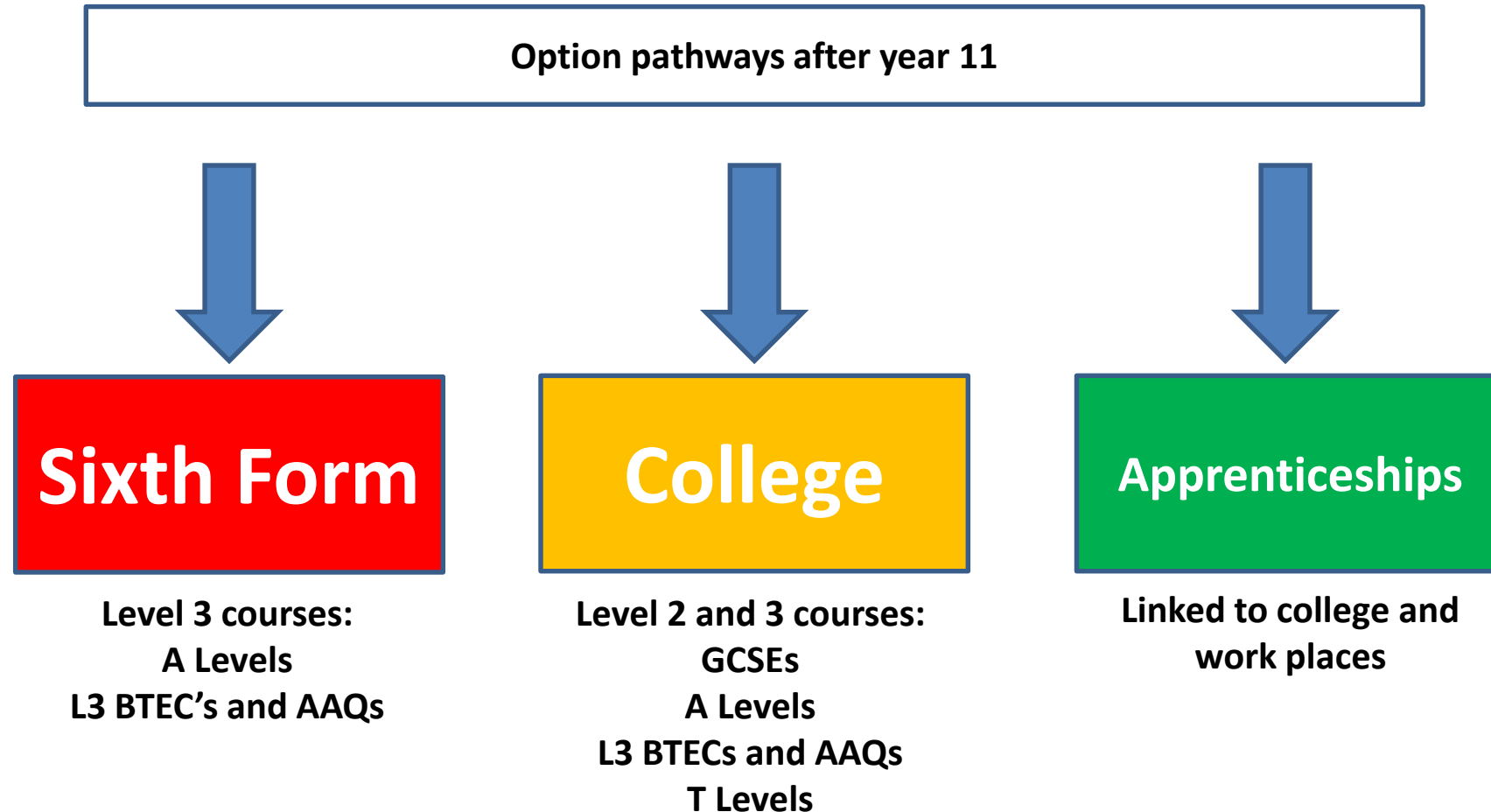
EXCEED



Assistant Principal – Head of Sixth Form

Mr Lee Huckle

Taking the Next Step



Please speak to the careers advice team for further guidance and visit the careers fair in the sports hall this afternoon/evening



Year 13 Results	2025
A*-A (or equiv.)	35%
A*-B (or equiv.)	66%
A*-C (or equiv.)	86%
A*-E (or equiv.)	99%

Number 1 Sixth Form in Central Bedfordshire from 2025 results

Destinations 2025



Destination	Number	%
University	122	55.45
Degree Apprenticeship	6	2.73
Other Apprenticeship	16	7.27
Employed	30	13.64
Seeking Employment	15	6.82
College	3	1.36
Training	1	0.45
Services	1	0.45
Gap Year	11	5
Repeat Yr13	1	0.45
Unknown - Have been contacted, no response	14	6.36

Please visit the alumni area of the Sixth Form webpage to view videos of many of our students and what they went on to do:

The Sixth Form Alliance

Alumni

Inviting back alumni students to speak with our students from a wide variety of destinations: universities, apprenticeships and jobs



Universities

Inviting in Universities to speak with our students: Russell Group and Local.

University visit and taster days: University of Hertfordshire and Bedfordshire.



Employers

Inviting in local, national and international employers to speak about future options.



Parents/Carers

Inviting in parents/carers to speak with students about their pathways to different careers.



Apprenticeship Providers

Inviting in apprenticeship providers to advise and guide on apprenticeships: FCDO, MBDA, Unilever, Specsavers, Glaxo, Network Rail.



Courses on offer

A Levels:

Fine Art
Biology
Business studies
Chemistry
Computer science
Dance
Drama & Theatre Studies
English Language & Literature
English Literature
Film Studies
French
Geography
Graphic Communications
History
Mathematics
Mathematics

Philosophy, Religion and Ethics
Physical Education
Physics
Politics
Product Design
Psychology
Sociology
Spanish
Textiles

BTEC's, Applied Level 3s and AAQs:

Applied Science	Media
Business (Single)	Music Technology
Food and Nutrition	Sport (Single,
Health and Social Care	Double & Triple) Further
Information Technology	

35 Courses



Warning: Courses with low demand on the first day of the academic year in September, may be cut.

Entry and Course Requirements



- **Five** grade 5s minimum for entry to A Level courses
- **Six** Grade 4s minimum for entry to BTEC/Applied courses
- Each subject has its own entry requirement and Average Point Score (see page 8, 9 and 10 in the handbook)

Subject/Course	Average Points Score – Guidance	Minimum Entry Requirements
BTEC Level 3 Applied Science (AAQ)	4.2	Two grade 4s In GCSE Sciences Grade 4 In GCSE Maths Grade 4 In GCSE English Language and Literature.
Fine Art	4.4	Grade 5 In GCSE Art
Biology	5.3	Two Grade 6s In GCSE Sciences (if Triple Science Is studied, then one must be Biology) (if Combined Science Is studied, then biology components must be Grade 6). Grade 6 In GCSE Maths Pass the entry exam.
Business	4.2	Grade 5 In GCSE Maths Grade 5 In GCSE English Language or Literature if Business Is studied at GCSE a grade 5 Is needed.
BTEC Level 3 Business (Single)	4.2	Grade 4 In GCSE English Language or Literature Grade 4 In GCSE Maths if Business Is studied at GCSE a Merit grade Is needed.
Chemistry	5.3	Two Grade 6s In GCSE Sciences (if Triple Science Is studied, then one must be Chemistry) (if Combined Science Is studied, then chemistry components must be Grade 6). Grade 6 In GCSE Maths Pass the entry exam.
Computer Science	5.3	Grade 5 In GCSE Computer Science Grade 6 In GCSE Maths
Dance	4.2	Grade 5 In GCSE Dance Grade 5 In GCSE Language or Literature
Drama & Theatre Studies	4.2	Grade 5 In GCSE Drama Grade 5 In GCSE English Language or Literature

Continued on next page...



Head Student

Oliver Whitmore

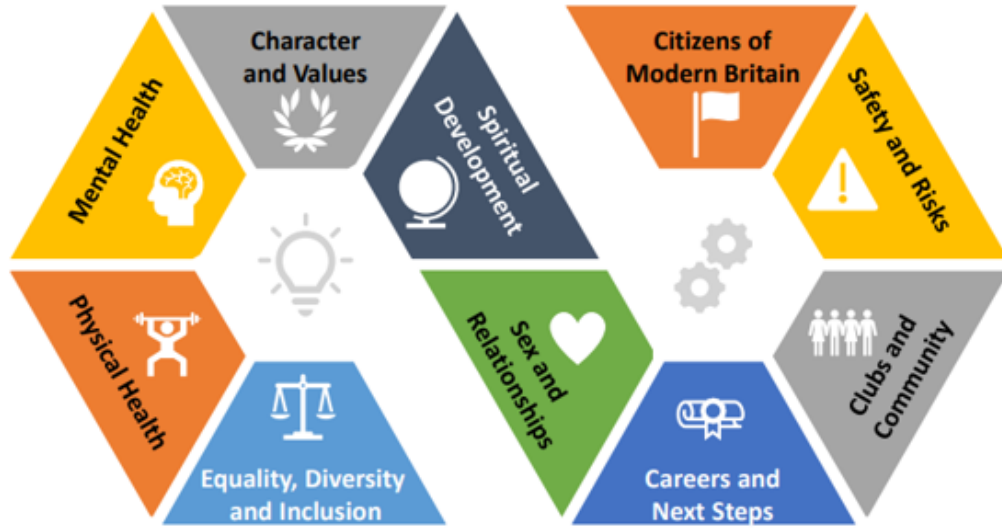


Assistant Principal – Head of Sixth Form

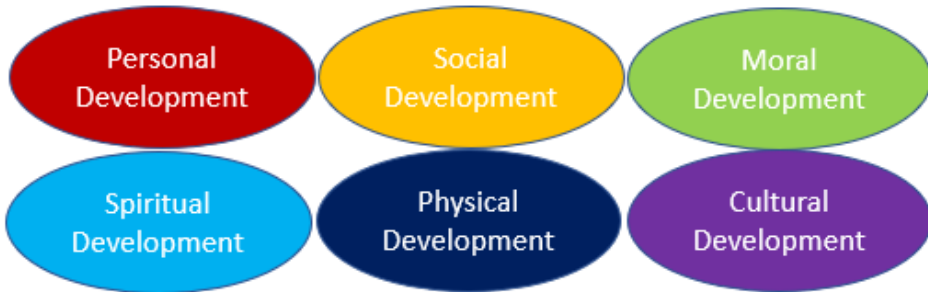
Mr L Huckle

SWA Core Mission: At Samuel Whitbread Academy we strive to develop healthy, resilient and independent learners, who read confidently for both learning and pleasure, and who participate in culturally enriching and diverse experiences.

Personal Development



Cultural Capital Development



EQUALITY
TEAMWORK
DETERMINATION
INTEGRITY
EMPATHY
INGENUITY
RESPECT

Academic Development

VESPA

Vision
Effort
Systems
Practice
Attitude

B

Believe

Have a belief in yourself in academic and extra-curricula areas of your life. Have the belief you can achieve your aspirations and aim high.

A

Achieve

Achieve your personal academic and extra-curricular aims in school and out of school.

S

Succeed

Motivate and dedicate yourself to your academic studies so you succeed in achieving your targets and also enhancing your wider life skills.

E

Exceed

Go above and beyond. Don't see a target grade as the limit. Push beyond that. Exceed your own and others expectations of you in your academic and extra-curricular areas.

Extra-curricular, Super-curricular and Enrichment



University Mock Trial



Race Car Team



Ghana Sister School



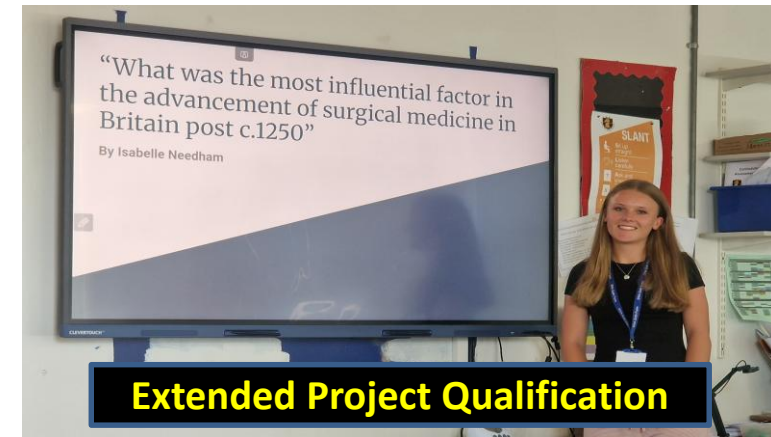
CAMPS International Expeditions



Alumni Fairs



Apprenticeship Visits



Extended Project Qualification

Extra Curricular and Enrichment: Sports Academies



**Northampton Saints Rugby
Development course**

**Whitbread Netball Academy
partnered with Saracens
Mavericks**

**Samuel Whitbread Football
Academy**

Please take a look at the Sixth Form web pages for further details and videos of the sports academies or visit the sports academies near the gym tonight.

<https://www.samuelwhitbread.org.uk/page/?title=Whitbread+Sports+Academy&pid=158>



Assistant Head of Sixth Form
Head of Year 12
Mrs Hoad

Making the Transition



Support for our students:

- Interventions (1:1, lunch, afterschool)
- Dedicated CEIAG Coordinator (4YPUK) and PASO
- Counselling
- Peer Mentoring
- 16-19 Bursary fund
- Special Educational Needs Support
- Aspiration and aiming high support – The Sixth Form Society
- Student leadership roles: school leadership team, Society leadership team, prefects, tutor group reps.
- Personal development through the morning tutorial programme 8.20am – 8.45am each morning.



Work experience opportunities



- One week is allocated at the end of the summer term of year 12 for ALL students to go on work experience.
- The work experience needs to be planned and organised by the student – the school does not do this for you.
- The sixth form team will make visits or phone calls to check students at their work experience placement

If you would like more advanced information on the year 12 work experience week please speak with Mrs Freeman at the careers fair in the sports hall or email lfreeman@bestacademies.org.uk

Sixth Form Dress Code – Professional

Lanyards are a compulsory part of the Sixth Form dress code and must be worn around the neck and visible at all times whilst on school site. This is for safeguarding reasons.

Dress down days – will be arranged alongside non-uniform days with the rest of the academy.



Examples of acceptable attire	Examples of unacceptable attire
<ul style="list-style-type: none">• Trousers, dress and/or skirt with a formal jacket (jacket not compulsory).• Smart chinos, white/black denim trousers/shorts• Tailored knee length shorts• Long or short sleeve shirts. Optional tie can be worn.• Smart collared polo shirt/top.• V-neck sweaters and jumpers.• Cultural clothing.• Footwear must be suitable for walking at school, including evacuating onto the field in case of an emergency. If worn, sandals must enclose the heel securely with a back. Students participating in practical lessons such as science, engineering, food or similar must have covered feet in laboratories for safety reasons.• Optional attire: Specific clothing for the sports academies (rugby, football, netball and dance) must have the school logo present on all items and be sourced from the sports academies agreed suppliers, and only school branded sports attire can be worn at the academy.	<ul style="list-style-type: none">• Blue jeans/denim, including ripped jeans/trousers.• Tracksuits.• Combat trousers.• Collarless shirts or casual sports T-shirts.• Sweatshirts and non-school hoodies• Skirts and shorts that are not on or just above the knee.• See through items of clothing.• Crop tops and tank tops• Strapless tops (a shoulder strap must be present).• Baseball caps and hats.• Clothing with slogans/logos.• Flip-flops, sliders, crocs, slippers and high heeled shoes.• If you are not part of the sports academies (rugby, football, netball or dance), you should be abiding by the professional dress code and should not be in SWA branded sports attire when not playing sport.



Transportation for 2026-2027

Please note that sixth form students **are not guaranteed** a place on the school bus. A concession is sold when there is a spare seat on a non-registered route and are sold on a **first come first served basis** so please aim to have your form completed and payment made by around mid-August. A concession will be honoured to the end of the term in which it is purchased.

To apply for a concessionary pass you will need to email Central Bedfordshire transport - mainstream.transport@centralbedfordshire.gov.uk requesting them to post a form out to you. All application forms will be sent out on the same day first class to give equal opportunity. This form is to be used for those students who wish to travel to school by bus, but who **do not qualify** for any kind of free or subsidised transportation.

Please direct any transport queries you may have to swa-transport@bestacademies.org.uk

Please see the transport section of the Sixth Form webpage and Mr Whittle on the transport stall in The Street.



Assistant Principal – Head of Sixth Form

Mr L Huckle

Application Process



Next steps

- Discuss your choices with family, teachers and course leaders
- Speak to department leaders and students
- Think about your **future!**
- What courses do you need for your next step?
- Please apply online by 2nd February 2026. Application forms can be found here:

<https://www.samuelwhitbread.org.uk/page/?title=Applications+and+Admissions&pid=59>

INTERNAL APPLICATION

EXTERNAL APPLICATION

Where can I find more information?

- Sixth Form Prospectus
- Course leaders
- Website

https://www.samuelwhitbread.org.uk/site/data/files/sixth_form/about-us/E779876B1A1DD73D4E0DF52E2F7A76BD.pdf

Biology

Content and Aims

This specification is designed to encourage candidates to develop:

- An enthusiasm for biology
- Practical skills alongside understanding of concepts and principles
- An appropriate and relevant foundation of knowledge and skills for the study of biology in Higher Education.

Key Features

This specification stimulates the enthusiasm of teachers and students from the start. As a stepping stone to future study, it allows students to develop the skills universities want to see. The course intends to nurture a passion for Biology & lay the groundwork for further study in courses like biological sciences and medicine.

Year 1 Units

- Biological molecules
- Cells
- Organisms exchange substances with their environment
- Genetic information, variation and relationships between organisms

Year 2 Units

- Energy transfers in and between organisms
- Organisms respond to changes in their internal and external environments
- Genetics, populations, evolution and ecosystems
- The control of gene expression

Career Considerations

Students who have studied A level Biology may go on to study a wide variety of different subjects at university. These include medicine, dentistry, physiotherapy, nursing, genetics, forensics, ecology, veterinary science, agriculture, sports science, psychology, horticulture and conservation.

Examination Board

AQA

Entry Requirement

- APS 5.3
- Two Grade 6s in GCSE Sciences (If Triple Science is studied, then one must be Biology). (If Combined Science is studied, then Biology components must be Grade 6).
- Grade 6 in GCSE Maths
- Pass the entry exam.

Examination Breakdown

- 100% external examination

Contact

Head of Biology: [Mrs J.Ambrose](#)



KS5 Curriculum & Courses

The curriculum in the Sixth Form is one that provides:

1. Academic success
2. Stimulation and challenge
3. Choice and diversity
4. Progression onto a range of post Sixth Form options
5. Access for all who meet the entry requirements
6. Encouragement for independent and life-long learning

The size of the Sixth Form means our curriculum offer at post 16 is second to none, with **38** Level 3 courses on offer. We recommend students study three courses, except those studying Further Mathematics and the most able students, who often take four. Alongside these courses, we offer a range of enrichment courses including: Extended Project Qualification (which is highly regarded by universities), Level 3 mathematical studies and many more timetabled and non-timetabled enrichment opportunities such as Duke of Edinburgh.

For curriculum information on all of our KS5 subjects, including what students will learn in year 12 and 13, please read the Sixth Form Subject Prospectus [here](#).

For more in-depth information about the KS5 courses that we offer please visit the exam board websites. Each course in the subject prospectus indicates the examination board.

APPLIED SCIENCE BTEC

ART A LEVEL

BIOLOGY A LEVEL

BUSINESS BTEC SINGLE & DOUBLE

BUSINESS STUDIES A LEVEL

CHEMISTRY A LEVEL

COMPUTER SCIENCE A LEVEL

DANCE A LEVEL

DESIGN & TECHNOLOGY A LEVEL

DRAMA & THEATRE STUDIES A LEVEL

ENGLISH LANGUAGE & LITERATURE A LEVEL

ENGLISH LITERATURE A LEVEL

Online applications need to be received by 2nd February 2026



CAREERS FAIR

Thursday 13th November

4:00pm - 7pm in the Sports Hall

- Are you aged 13-18?
- Are you thinking about your next steps after GCSE or A level?
- Are you wondering what the local area has to offer in terms of employers?
- Are you a parent/carer and would like to know what apprenticeships or jobs are available for your child?
- Come along to our Careers Fair to meet representatives from a wide variety of industries & companies.



We believe that being able to offer students the opportunity to talk and discuss their career aspirations with top employers is beneficial for their future planning.

FIRE EXIT

EXHIBITOR
REFRESHMENTS

FIRE EXIT

Voyager Flight Simulation

Saxon Pool

The Right Advice

University of Lincoln

ACO Technologies

4YP

University of Hertfordshire

PoetsIN

LM

Bedford College

Specsavers

Barclays Bank

University of Bedfordshire

Neville Trust Group

Bedford Estates

[Empty Box]

Ashe Construction

Family Tree Day Nursery

FCDO

Machins Solicitors

Extreme Scaffolding

KPMG

School Nursing Team

[Empty Box]

Network Rail

North Herts College

Stageworks Studios

SSG College

[Empty Box]

[Empty Box]

ENTRANCE

FIRE EXIT / ENTRANCE

Contact the Sixth Form



- swa-sixthformadmissions@bestacademies.org.uk
- Miss Collins – Administration and applications collins@bestacademies.org.uk
- Mrs Bonham – Pastoral and Academic Support Officer cbonham@bestacademies.org.uk
- Mrs Hoad – Assistant Head of Sixth Form – Head of Year 12 shoad@bestacademies.org.uk
- Mr Tonking - Assistant Head of Sixth Form – Head of Year 13 ctonking@bestacademies.org.uk
- Mr Huckle – Assistant Principal – Head of Sixth Form and Careers Lead
lhuckle@bestacademies.org.uk
- Ms Freeman – Future Options, Pathways and Careers Coordinator lfreeman@bestacademies.org.uk
- Miss Hopkins – Degree Apprenticeship Leader ahopkins@bestacademies.org.uk
- Dr Haynes – Sixth Form Enrichment Leader jhaynes@bestacademies.org.uk
- Website: www.samuelwhitbread.org.uk
- Facebook: SWA Sixth form

Please watch our other Sixth Form videos on the website here:

<https://www.samuelwhitbread.org.uk/page/?title=Sixth+Form+Open+Evening&pid=144>

