

BELIEVE • ACHIEVE • SUCCEED • EXCEED

SIXTH FORM HANDBOOK 2019 - 2020



“ Good teaching challenges students' thinking. Teachers use their expert subject knowledge to ask probing questions and test students' understanding. ”

OFSTED 2017

Message from the Head of Sixth Form: **Mr Lee Huckle**

The Samuel Whitbread Sixth Form ethos can best be summarised in four words: Believe – Achieve – Succeed – Exceed. Every student in our Sixth Form is encouraged to believe in their abilities and to achieve and succeed with a positive mental attitude. We believe that successful Sixth Form students aim for more than just good academic results, they strive to work effectively as part of a team, to lead, listen and to be creative.

The success of all of our students both personally and socially is of vital importance to our Sixth Form team and we are very proud of our students' academic achievements.

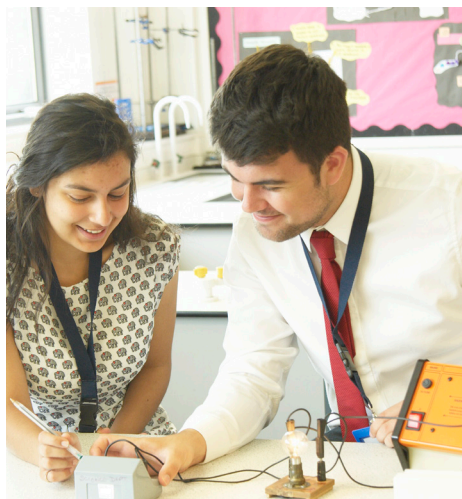
As Head of Sixth Form my aim is to ensure that every student leaves Samuel Whitbread with the best possible set of qualifications and range of skills to compete in the modern world, as well as the strength of character to thrive under pressure and the self-belief to be a leader. Along with my dedicated Sixth Form team, including tutors and Progress Leaders, we aim to support our students' dreams – whatever they may be!

I believe passionately in the importance of a vibrant, dynamic learning environment and our highly qualified staff offer a wide range of enrichment opportunities which ensure students are individually challenged and stretched in academic study and beyond.

Students in the Sixth Form need to feel comfortable to learn from their mistakes and should have no fear of failure. They need to have a respect for and desire to push their learning boundaries, so they can challenge themselves and define their own set of values.

On the school website you will find a flavour of what is on offer in the Sixth Form at Samuel Whitbread. If you would like to arrange a visit to see for yourself what life is like in the Sixth Form then please contact the Sixth Form admissions team on swa-sixthformadmin@bestacademies.org.uk

We look forward to welcoming you.



WHY SWA Sixth Form?

Last year our students gained excellent A Level results with 48% gaining A*- B grades and 26% gaining A* - A grades at A Level. This success has allowed students to progress either onto their chosen university or into a career pursuing professional qualifications. This year 98% of the Year 13s who applied went to their first choice university. Other students went onto some amazing apprenticeships, further education and degree programmes.

We have a wide range of academic and vocational courses to suit students' individual learning needs and a comprehensive range of enrichment and extra curricular activities (Please see enrichment booklet on the website). We encourage our students to get involved and play a productive role in our community.

Student Voice

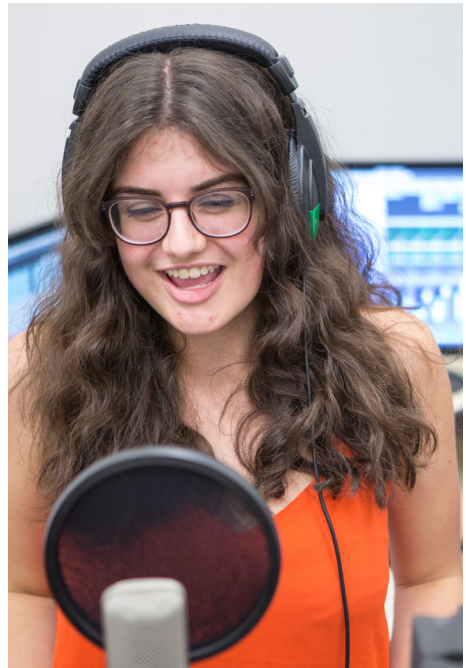
In the Sixth Form there is a range of opportunities for students to become involved in academy life and the wider community, which we call 'Student Voice'. Students are encouraged to take responsibility for improving the academy learning environment - 'Student Voice' is an excellent platform for this type of activity. Leadership roles include; Students as Researchers, Students as Interviewers, Student Leadership Group, House Captains, Senior Student Prefects, Head Boy and Head Girl team.

A LEVEL RESULTS (YEAR 13):

%	2017	2018
A*-A	22%	22%
A*-B	49%	48%
A*-C	72%	76%
A*-E	98%	98%

“*Students have very positive attitudes to learning. They work hard in lessons and they contribute to the wider life both of the Sixth Form and of the main school.*”

OFSTED 2017



The Head Boy & Head Girl Team and Prefects

Student Prefects promote the academy as ambassadors and are role models for fellow students at all times. Dedication, confidence and flexibility are important qualities for these Prefects and they are involved in many areas of the academy including frequent liaison with the Principal, Vice Principals and the Head of Sixth Form. The Head Boy and Head Girl team lead the Student Leadership Group and the School Council meetings, attend Governors meetings and make public speeches at public events. Prefects also assist staff with the organisation of academy charity and house events and school tours. All students are encouraged to apply for these positions to enrich their learning, confidence and personal development.



MONEY MATTERS

16-19 BURSARY FUND

The 16-19 Bursary Fund is a scheme to help young people facing financial hardship to stay in full time education. Full details, including the Sixth Form 16-19 Bursary Fund application form, can be found on the Samuel Whitbread Academy website.

CARE TO LEARN & CHILDCARE

If you are a young parent, Care to Learn can help pay for your childcare and related travel costs while you are learning. Samuel Whitbread Academy has an excellent nursery with outstanding facilities onsite offering safe, caring and stimulating childcare and first-class early years education for children from two to five years old. Further information can be obtained by calling BEST Nursery on 01462 815637.

WHAT NEXT? Please contact a member of the Sixth Form team for further advice.

QUALIFICATIONS EXPLAINED

A LEVEL (REFORMED)

The new reformed Advanced Level qualification consists of modules studied over two years. At the end of Year 13 the reformed A Level courses are examined.

A levels are awarded pass grades A* to E.

BTEC & APPLIED GENERAL QUALIFICATIONS LEVEL 3

BTEC & applied general qualifications are work-related qualifications equivalent to A levels, and are also studied over 2 years. These courses are predominately assessed by coursework. We offer the following qualifications: BTEC Certificate, Subsidiary Diploma, Diploma and Extended Diploma. They are awarded Pass, Merit and Distinction grades. You cannot study a BTEC course for one year.

We offer the following subjects:

- Sport
- ICT
- Health and Social Care
- Music Technology
- Business
- Applied Science (Applied course)

Please see our Sixth Form Subject Handbook for full details on our courses.



“Students spoke very positively about the wide range of extra-curricular activities that are on offer to them and of the individualised support that they receive from staff.”

OFSTED 2017

LIFE RULES

BE HAPPY
LOVE ONE ANOTHER
HELP OTHERS
ALWAYS TELL THE TRUTH
BE SWEET
KEEP YOUR PROMISES
LAUGH A LOT
WORK HARD
BUT PLAY HARD
THINK BEFORE SPEAKING
SMILE
SAY PLEASE & THANK YOU
EAT YOUR VEGGIES!



ENTRY REQUIREMENTS

LEVEL 3 COURSES

- To have unrestricted access to Level 3 courses (A levels and Level 3 BTEC), a student must have 9-4 grades in six separate subjects at GCSE or equivalent. At least one of these subjects must be English. In some cases we expect students to have at least a grade 5 in some GCSE courses.
- Students who achieve 9-4 grades in 5 separate subjects at GCSE or equivalent will be offered a specific list of Level 3 courses.

Please see specific minimum entry requirements and APS for further guidance. These are on pages 8 and 9.

Please Note Any students who have not achieved their Maths and/or English Language GCSE at grade 4 will be expected to resit these in the Sixth Form until a grade 4 is achieved.

ENRICHMENT STUDIES

All students are expected to take an additional course to enrich their Sixth Form experience. For September 2018 we plan to offer: Extended Project Qualification, L3 Core Maths, the Northampton Saints Rugby Development Programme, the Whitbread football academy and the Mavericks netball academy.

Enrichment opportunities that cannot be timetabled but which we encourage our students to do include:

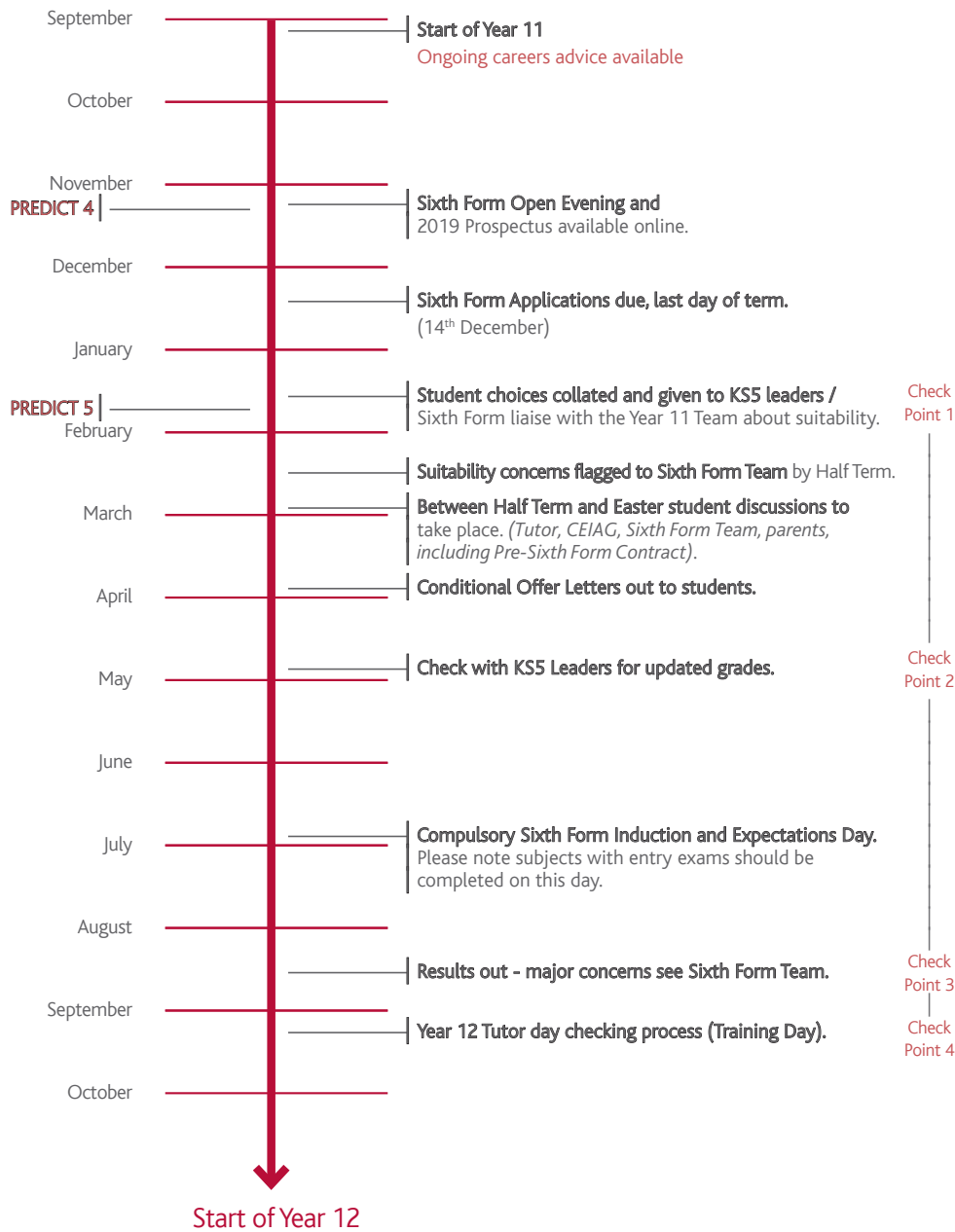
- MOOCs – Massive Open Online courses
- Teachers 4 Tomorrow
- Duke of Edinburgh Award
- Sports Leaders
- Dance Ambassadors

Please note that these opportunities may be subject to change.

Students are supported to make appropriate course choices when they join in Year 12 and, consequently, the number of students completing their studies is high. Last year, the majority of Year 13 students progressed on to university.

OFSTED 2017

YEAR 11 SIXTH FORM APPLICATION PROCESS TIMELINE



Sixth Form Minimum Entry Requirements

Subject/Course	Average Points Score – Guidance	Minimum Entry Requirements
Applied Science – Level 3 Certificate	3.8	Two grade 4s in GCSE Sciences. Grade 4 in GCSE Maths Grade 4 in GCSE Language or Literature.
Fine Art	4.3	Grade 5 in GCSE Art
Biology	5.3	Grade 6 in GCSE Sciences. If more than one Science is studied at GCSE, two must be at grade 6 (one must be Biology). Grade 5 in GCSE Maths Pass the entry exam.
Business	4.0	Grade 5 in GCSE Maths Grade 5 in GCSE Language or Literature If Business is studied at GCSE a grade 5 is needed.
BTEC Level 3 Business	3.8	Grade 4 in GCSE Language or Literature Grade 4 in GCSE Maths
Chemistry	5.2	Grade 6 in GCSE Sciences. If more than one Science at least two must be at a grade 6 (one must be Chemistry). Grade 6 in GCSE Maths (discussion with department if a grade 5 is achieved) Pass the entry exam.
Computer Science	5.1	Grade 5 in GCSE Computer Science Grade 6 in GCSE Maths (discussion with department if a grade 5 is achieved)
Drama & Theatre Studies	3.8	Grade 5 in GCSE Drama Grade 5 in GCSE Language or Literature
Engineering Single Award	4.5	Ideally need to have studied design or engineering and achieved a grade 5 Grade 4 in GCSE Maths Grade 4 in GCSE Sciences If Engineering has been studied at GCSE a grade 5 is needed.
Engineering Double Award	4.5	Ideally need to have studied design or engineering and achieved a Grade 5 Grade 4 in GCSE Maths Grade 4 in GCSE Sciences If Engineering has been studied at GCSE a grade 5 is needed.
English Language/Literature	4.3	Grade 5 in English Language Grade 5 in English Literature
English Literature	4.3	Grade 6 in GCSE Literature Grade 5 in GCSE Language
Film Studies	3.8	Grade 5 in GCSE Language and Literature
French	5.3	Grade 6 in GCSE French
Geography	4.5	Grade 5 in GCSE Geography Grade 5 in GCSE Maths (discussion with department if a grade 4 is achieved) Grade 5 in GCSE Language or Literature

Subject/Course	Average Points Score – Guidance	Minimum Entry Requirements
Graphic Communications	3.8	Grade 5 in GCSE Art, Graphic Communications or DT Graphics (Grade 5 in Graphics).
BTEC Level 3 Health & Social Care	3.9	Grade 4 in GCSE Language or Literature
History	4.5	Grade 5 in GCSE History Grade 5 in GCSE Language or Literature (discussion with department if grade 4s are achieved)
ICT BTEC	3.8	Grade 4 in GCSE Maths Grade 5 in Language or Literature (discussion with department if grade 4s are achieved)
Mathematics	5.1	Grade 6 in GCSE Maths Pass the entry exam
Further Mathematics	6.1	Grade 7 in GCSE Maths Pass the entry exam
Music	4.4	Grade 6 in GCSE Music
BTEC Level 3 Music Technology	3.8	Grade 4 in GCSE Music or Level 2 Pass in BTEC Music
Physical Education	4.3	Grade 5 in GCSE PE Two grade 5s in GCSE Sciences (discussion with department if a grade 4 and 5 achieved) Must play a competitive sport at a high level.
BTEC Level 3 Sport - Single	3.8	Grade 4 in GCSE Language or Literature. One Grade 4 in GCSE science.
BTEC Level 3 Sport - Double	3.8	Grade 4 in GCSE Language or Literature. One Grade 4 in GCSE science.
BTEC Level 3 Sport - Triple	3.8	Grade 4 in GCSE Language or Literature. One Grade 4 in GCSE science.
Physics	5.3	Grade 6 in GCSE Sciences. If more than one Science at least two must be at a grade 6 (one must be Physics). Grade 6 in GCSE Maths Pass the entry exam.
Product Design	3.8	Grade 4 in GCSE Language or Literature Grade 4 in GCSE Maths Grade 5 in Design or Art subject.
Psychology	4.4	Grade 5 in GCSE Maths (discussion with department if a grade 4 is achieved) Grade 4 in GCSE Language and Literature If studied Psychology at GCSE a Grade 5 is needed Two grade 4s needed in GCSE Sciences
Sociology	3.9	Grade 4 in GCSE Language or Literature If studied Sociology at GCSE a grade 4 is needed.
Spanish	4.5	Grade 6 in GCSE Spanish

*Please note that we may not be able to run courses with very low demand.

FACILITATING SUBJECTS

Facilitating subjects are A levels which are advised to be taken if you want to apply for a small group of universities referred to as the Russell Group. You also need to consider choosing from the facilitating subject list for subjects such as medicine or veterinary science.

The Russell group includes 24 of the top universities in the UK. Many universities which are not part of the Russell group will offer you an excellent education – make your choices and future plans choosing a course and a career you love. Most universities accept BTECs and other qualifications as well as A levels. You must make sure you check the entry requirements – especially the more detailed information – for your course.

Facilitating subjects

Mathematics and Further Mathematics

English Literature

Physics

Biology

Chemistry

Geography

History

Languages (Classical and Modern)

Do your own research to make sure that your choice now does not affect your future options – do not assume that a course requires a particular subject. Subjects that are not on the list might be vital for your future choices. For example music and art are very important if you want to do a degree in those subjects.

Contact

Further enquiries about Russell group, Oxbridge, medicine or veterinary applications – please contact the High Attainers Coordinator Miss Annie Priano at apriano@bestacademies.org.uk



HOW TO APPLY

Once you have read the Sixth Form Handbook and online prospectus, selected your choices and checked the entry requirements, you are ready to apply! An application form can be found online or by contacting the Sixth Form Office. Once completed either talk to the Academy Reception, Sixth Form Office or send by post to:

Sixth Form Admissions
Samuel Whitbread Academy
Shefford Road
Clifton
Shefford
Bedfordshire
SG17 5QS

**CLOSING DATE FOR APPLICATIONS IS
14TH DECEMBER 2018.**

Interviews

Once we have received your application form, full consideration will be given to every applicant. We will invite all external applicants for an interview and a tour of the school in February/ March and will write to all successful applicants with conditional offer letters in March. All offers are subject to students achieving the minimum entry requirements for each of their subjects. A member of the Sixth Form team may contact you to discuss your course choices and to ensure you are making the best possible decision about your future pathway. Further interviews may also take place after the GCSE results day in August.

Entry Exam

Some subjects may require an entry exam - these will take place during the Sixth Form induction day or within the first week of the new term.

**For Further Information please contact our
Sixth Form Admissions Officer.**

Call: 01462 628059

Email: swa-sixthformadmin@bestacademies.org.uk

Visit: samuelwhitbread.org.uk



Samuel Whitbread Academy
Shefford Road
Clifton
Shefford
Bedfordshire
SG17 5QS

Telephone: 01462 629900
Email: swa-info@bestacademies.org.uk



www.samuelwhitbread.org.uk

